

advancing social science research methods

training
and events,
resources
and research

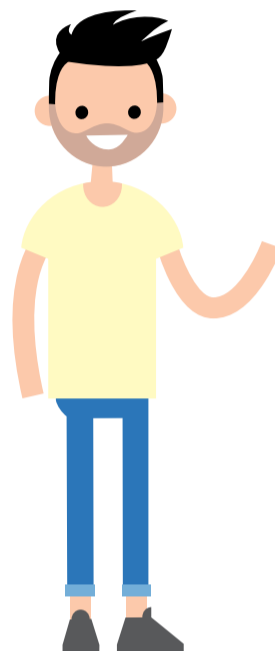


ncrm.ac.uk

resources

- ▶ publications (articles, working papers, reviews, assessments, reports)
- ▶ video and audio podcasts
- ▶ online learning resources
- ▶ links to trusted external resources
- ▶ methods news and updates via e-bulletin & newsletter ncrm.ac.uk/news/subscribe

Find us on: [Twitter](#) | [Facebook](#) | [YouTube](#) | [LinkedIn](#)



ncrm.ac.uk/resources
or search via
ncrm.ac.uk/explore

Southampton | Manchester | Edinburgh
Funded by ESRC since 2004

research

'in-house' research projects

- ▶ Data collection for data quality
- ▶ Working across qualitative longitudinal studies: a feasibility study looking at care and intimacy
- ▶ Accounting for informative item nonresponse in biomarkers collected in longitudinal surveys
- ▶ Anatomy of disclosure risk in a world of linked population data
- ▶ Pedagogy of methodological learning
- ▶ Quantitative methods pedagogy
- ▶ Changing patterns of social science data usage

'funded' research projects

- ▶ HomeSense: digital sensors for social research
- ▶ Innovations in small area estimation methodologies
- ▶ Measuring information exposure in dynamic and dependent networks (ExpoNet)
- ▶ SOCGEN: combining social science and molecular genetic research to examine inequality and the life course
- ▶ PASAR: participation arts and social action in research
- ▶ GRADE extension for complex social interventions
- ▶ Understanding household finance through better measurement

international exchange scheme funding & special
calls for submissions

ncrm.ac.uk/research

training and events

- ▶ free research methods training events
- ▶ subsidised training courses covering a wide range of research methods
- ▶ face-to-face and online training
- ▶ annual residential Autumn School
- ▶ Research Methods Festival
- ▶ training bursaries
- ▶ knowledge exchange: engaging with researchers, government, businesses and the public

ncrm.ac.uk/training



how to choose a research method



phone-a-friend?

what is the purpose of your research?

go with your gut feeling?



I don't know!

investigation of secondary data sources

document analysis

research reviews & meta-analysis

administrative data analysis

big data analysis

in-depth exploration of social processes, participants' meaning or culture



interviews
focus groups
observation
diary methods
phenomenology
ethnography
case study



have a cup of tea and get inspired!

change or challenge social processes



transformative research frameworks

critical methodologies

feminist research

emancipatory research

action research

participatory research

evaluate

cost analysis

mixing methods

ncrm.ac.uk
ncrm.ac.uk/explore

tell the full story, explore complex problems

generalise to population



creative methods

arts based: theatre, poetry, drawing, video



survey

questionnaire

face-to-face ... phone ... self-administered



predict behaviour

explore causation or set of natural laws



experiment

randomised controlled experiment

laboratory studies

none of these! give me more!

explore ncrm resources